

THIS INSTRUMENT WAS PREPARED BY:
JEFF S. HODAPP OF
CARNAHAN-PROCTOR AND ASSOCIATES, INC.
CONSULTING ENGINEERS
 SURVEYORS ENGINEERS PLANNERS
 6191 WEST ATLANTIC BLVD., MARGATE, FLORIDA 33063
 JANUARY 1998 950508J JSH

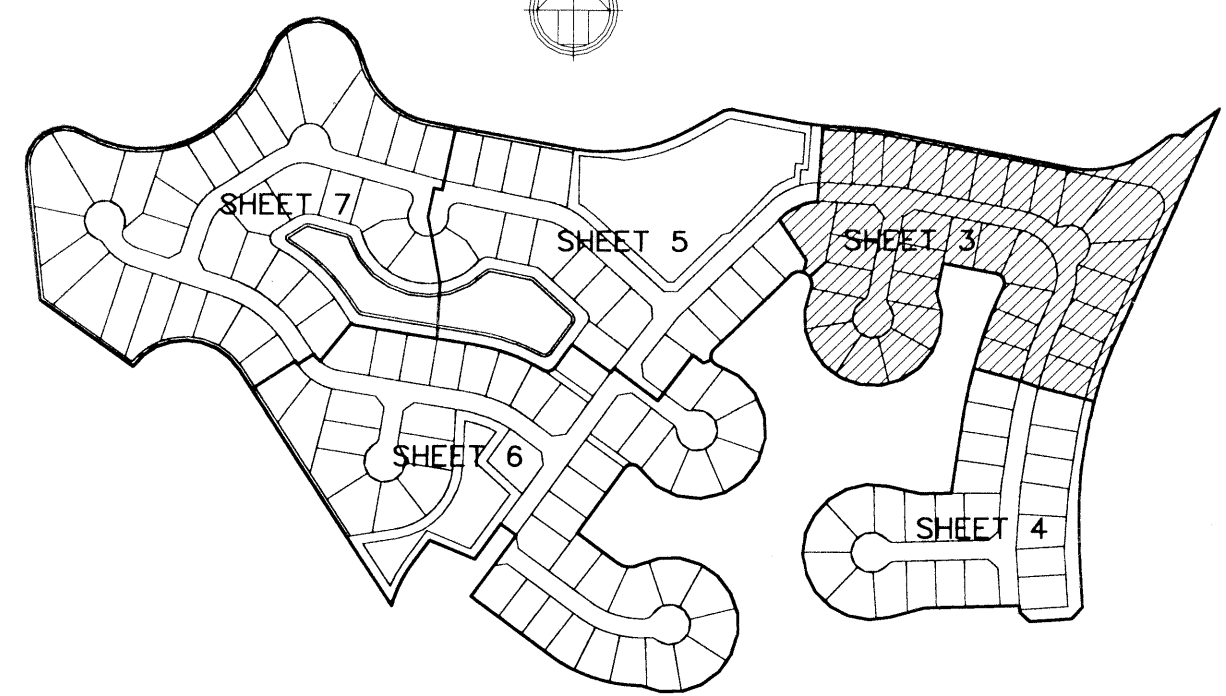
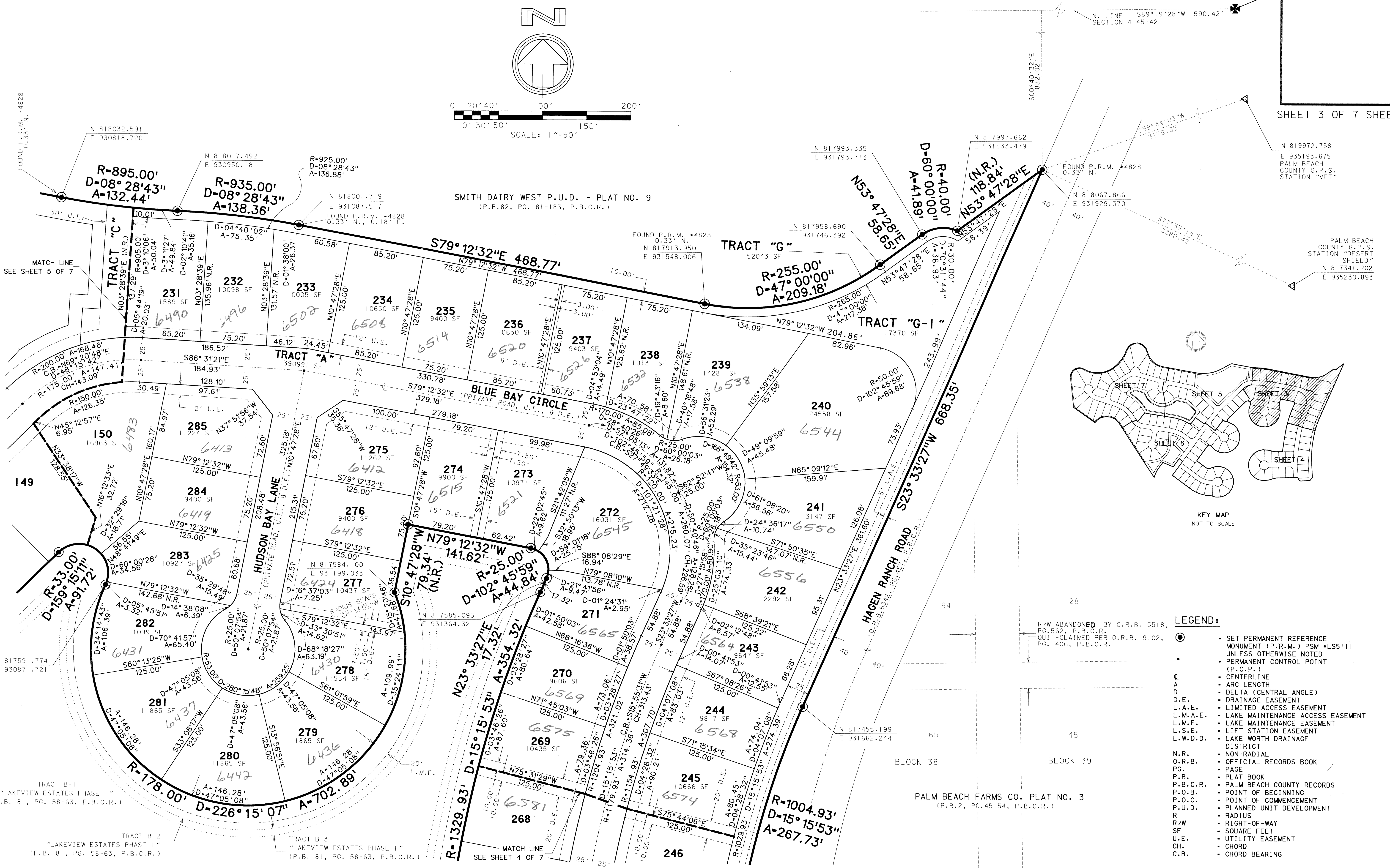
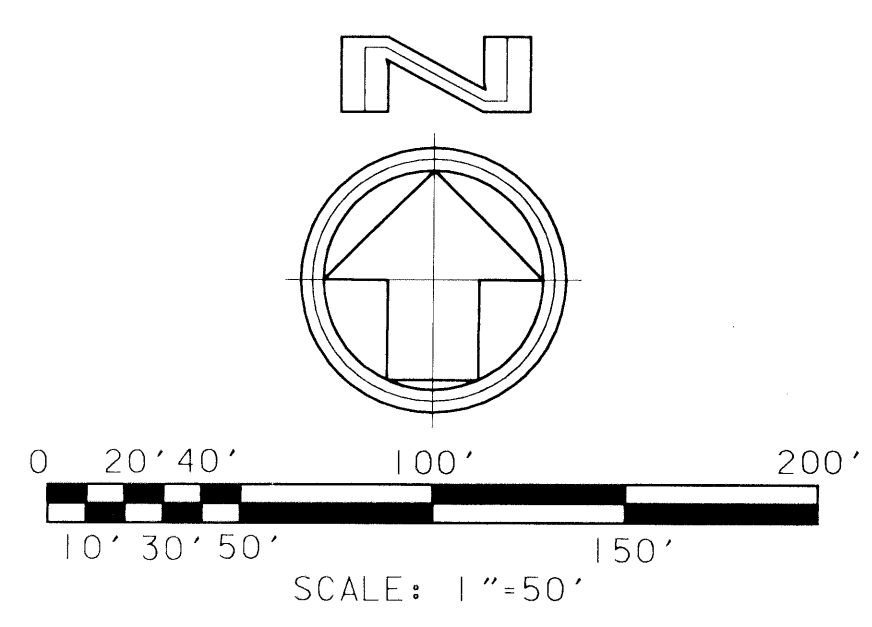
SMITH DAIRY EAST P.U.D.

0677-004

184

LAKEVIEW ESTATES PHASES 3, 4 & 5

A REPLAT OF A PORTION OF BLOCKS 38 AND 39, "PALM BEACH FARMS CO. PLAT NO. 3"
 (P.B.2, PGS.45-54, P.B.C.R.) AND THE RIGHTS-OF-WAY INCLUDED THEREIN,
 IN SECTION 4, TOWNSHIP 45 SOUTH, RANGE 42 EAST, PALM BEACH COUNTY, FLORIDA



KEY MAP
NOT TO SCALE

LEGEND:

- SET PERMANENT REFERENCE MONUMENT (P.R.M.) PSM • LS5111 UNLESS OTHERWISE NOTED
- PERMANENT CONTROL POINT (P.C.P.)
- CENTERLINE
- ARC LENGTH
- DELTA (CENTRAL ANGLE)
- D.E. DRAINAGE EASEMENT
- L.A.E. LIMITED ACCESS EASEMENT
- L.M.A.E. LAKE MAINTENANCE ACCESS EASEMENT
- L.M.E. LAKE MAINTENANCE EASEMENT
- L.S.E. LIFT STATION EASEMENT
- L.W.D.D. LAKE WORTH DRAINAGE DISTRICT
- N.R. NON-RADIAL
- O.R.B. OFFICIAL RECORDS BOOK
- PG. PAGE
- P.B. PLAT BOOK
- P.B.C.R. PALM BEACH COUNTY RECORDS
- P.O.B. POINT OF BEGINNING
- P.O.C. POINT OF COMMENCEMENT
- P.U.D. PLANNED UNIT DEVELOPMENT
- R. RADIUS
- R/W RIGHT-OF-WAY
- SF. SQUARE FEET
- U.E. UTILITY EASEMENT
- CH. CHORD
- C.B. CHORD BEARING

SHEET 3 OF 7 SHEETS

TRACT B-1
"LAKEVIEW ESTATES PHASE 1"
(P.B. 81, PG. 58-63, P.B.C.R.)

TRACT B-2
"LAKEVIEW ESTATES PHASE 1"
(P.B. 81, PG. 58-63, P.B.C.R.)

TRACT B-3
"LAKEVIEW ESTATES PHASE 1"
(P.B. 81, PG. 58-63, P.B.C.R.)

MATCH LINE
SEE SHEET 4 OF 7

PALM BEACH FARMS CO. PLAT NO. 3
(P.B.2, PG.45-54, P.B.C.R.)

N 819972.758
E 935193.675
PALM BEACH COUNTY G.P.S. STATION "VET"

PALM BEACH COUNTY G.P.S. STATION "DESERT SHIELD"
N 817341.202
E 935230.893

R/W ABANDONED BY O.R.B. 5518, PG.562, P.B.C.R. QUIT-CLAIMED PER O.R.B. 9102, PG. 406, P.B.C.R.